

Attachment A - State Warning Center

Each jurisdiction within the state is responsible for preparing for a disaster including establishing methods for alerting and warning the public, mobilizing resources and initiating protective actions. At the state level, the Governor's Office of Emergency Services (CalOES) operates the California State Warning Center (CSWC), which is staffed 24 hours a day, 365 days a year to act as the official state level point of contact for emergency notifications. From this center, Warning Center personnel maintain contact with County Warning Points, state agencies, federal agencies and the National Warning Center in Berryville, Virginia.

Notifications Received by the Warning Center:

- Local governments and Operational Areas notify the CSWC of emergencies that affect their community in accordance with existing laws, protocols, or when state assistance is requested or anticipated. Notifications may occur directly or via the CalEMA Regional Offices. Local Emergency proclamations should be sent to the CSWC in order to keep the Governor and key state agencies abreast of emergency conditions or when state assistance is requested.
- Earthquake Notifications: The CSWC receives notification of earthquakes from the California Integrated Seismic Network (CISN), National Earthquake Information Center (NEIC) and the United States Geological Survey (USGS). CISN is a statewide network that provides the basic information for California earthquakes shown on the CISN Display. The CISN Display is an Internet-based rapid earthquake notification system that receives earthquake information from networks world-wide.
- Tsunami Notifications: The CSWC receives tsunami notifications from the Alaska Tsunami Warning Center via the National Weather Service (NWS) and the National Warning Center.
- Weather Notifications: Notification of severe weather is received from the NWS.
- Energy Notifications: The California Independent Systems Operator (California ISO) monitors the California power grid, which consists of a network of long-distance, high voltage transmission lines and substations that carries bulk electricity to local utilities for distribution to their customers. When the grid is unable to meet electrical demands, the California ISO will direct utilities to reduce their load and issue emergency notices of energy interruptions. The CSWC will be contacted by the California ISO when the operating reserves reach these critical levels.

- Hazardous Materials / Oil Spill Release Notifications: In accordance with state law, handlers, any employees, authorized representatives, agents or designees of handlers shall, upon discovery, immediately report any release or threatened release of hazardous materials to the CSWC.
- Nuclear Power Plant Notifications: The CSWC receives notifications of nuclear power plant events directly from Diablo Canyon, San Onofre and Rancho Seco power plants. Secondary notifications may be received from the affected county sheriff departments via California Law Enforcement Telecommunications System (CLETS), California Law Enforcement Radio System (CLERS) and Operational Area Satellite Information System (OASIS).
- Communications, Alert and Warning Systems: The CSWC is responsible for informing, communicating, alerting and notifying local governments, Operational Areas and state officials and the Federal Government of natural or human caused emergencies. To meet this responsibility, the Warning Center is equipped with a number of telephone, data and radio systems, including the California Warning System (CALWAS), CLETS, NWS Weather Wire, CSWC message switching computer, Emergency Digital Information Service (EDIS), CISN and Dialogic Automated Notification System, all of which are described in more detail later in this document. Most of these systems are used on a day-to-day basis; others are available for use in an emergency, as conditions require.
- NAWAS and CALWAS: The CSWC maintains the California Warning System (CALWAS) to communicate with CalEMA Regional Offices and County Warning Points during an emergency. CALWAS is part of the National Warning System (NAWAS).
- OASIS, CLETS, CLERS and EAS: The Operational Area Satellite Information System (OASIS), California Law Enforcement Telecommunications System (CLETS) and the California Law Enforcement Radio System (CLERS) are utilized to alert and notify sheriff and police departments and key Emergency Alert System (EAS) stations.
- Radios and Microwave Systems: The State Agencies Radio / Microwave System is utilized to communicate information to State Agencies and Emergency Operations Centers (EOC).
- EDIS: The Emergency Digital Information Service (EDIS) is a CalEMA-provided service, developed in response to a legislative mandate following the 1989 Loma Prieta Earthquake, as a method to assist the media in providing messages visually to the hearing impaired. Government agencies utilize EDIS for the distribution of warning and emergency information to the media and to the public.

Alerting and Warning State and Local Agencies: Multiple communication channels will be used to maintain constant communication with local, state and federal communications centers and to ensure the State can quickly respond to any developing emergencies. The Warning Center provides local and state agencies with a broad range of information, including, but not limited to:

- Local emergencies.
- Earthquakes.
- Tsunamis (seismic sea waves).
- Floods.
- Dam and levee failures.
- Major fires.
- Hazardous material spills.
- Radiological and nuclear incidents.
- Radioactive fallout wind data.
- Energy emergencies.
- Foreign animal disease.
- Missing and overdue aircraft or runaway trains.
- Terrorism threat.
- Precipitation forecasts.
- Winter road information.
- Major road closures.
- Weather watches and warnings.
- Severe weather emergencies.
- Search and rescue incidents.

Notification of Emergency Personnel: The CSWC maintains a list of agencies and personnel that are critical to emergency operations. The CSWC will utilize pager, cell phone, telephone, email, Blackberry and Dialogic Automatic Notification System to notify State personnel of an emergency and help guide response teams across the state. Diagrams of California's warning systems are provided in Attachment A – California Warning Systems.

Diagram A.1 – California Warning System

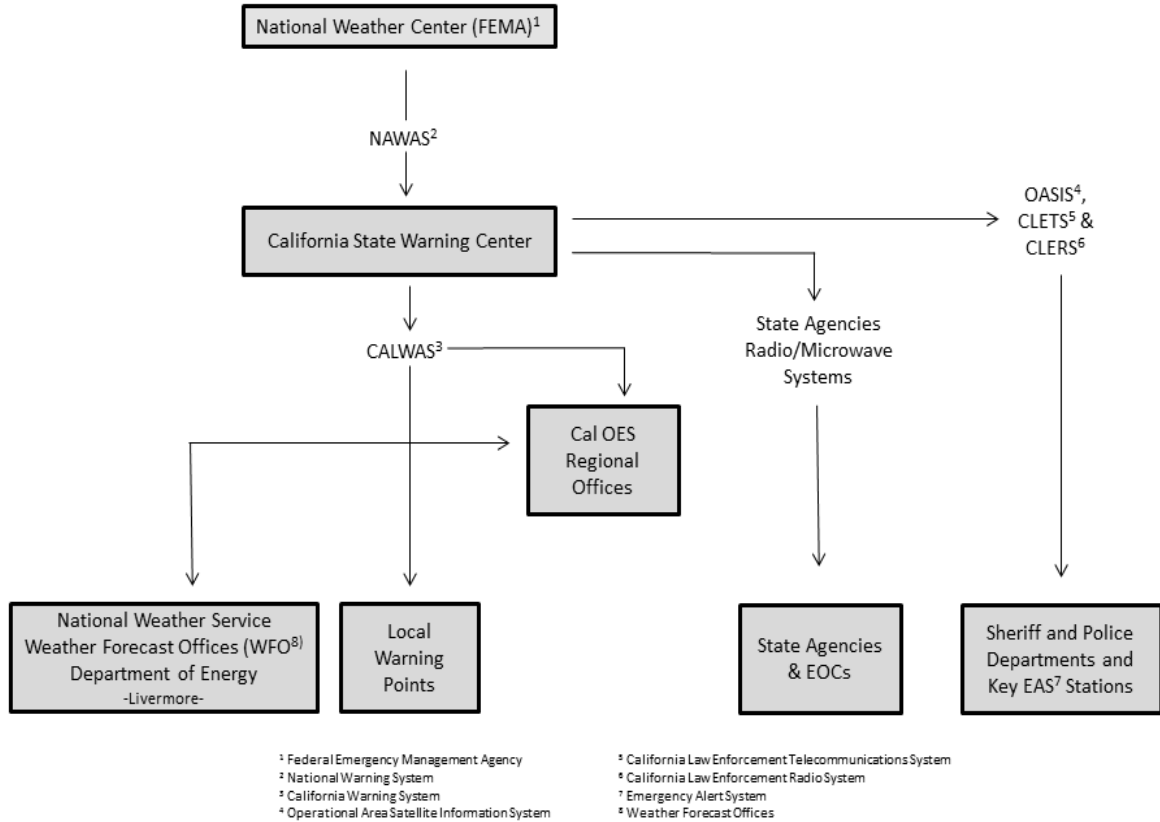


Diagram A.2 – Severe Weather Warning

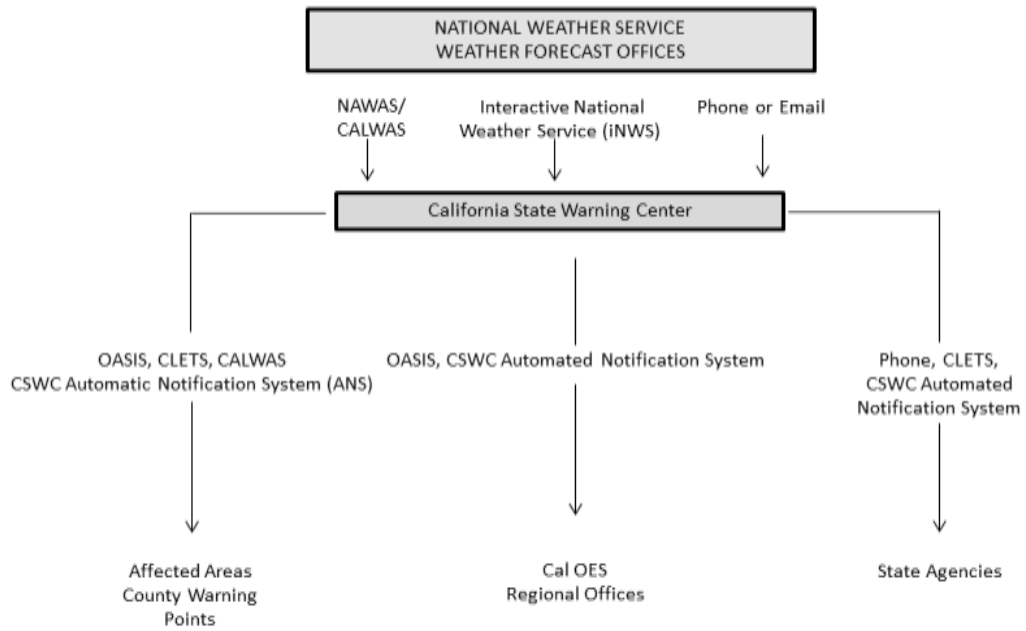


Diagram A.3 – Flood Forecast Warning

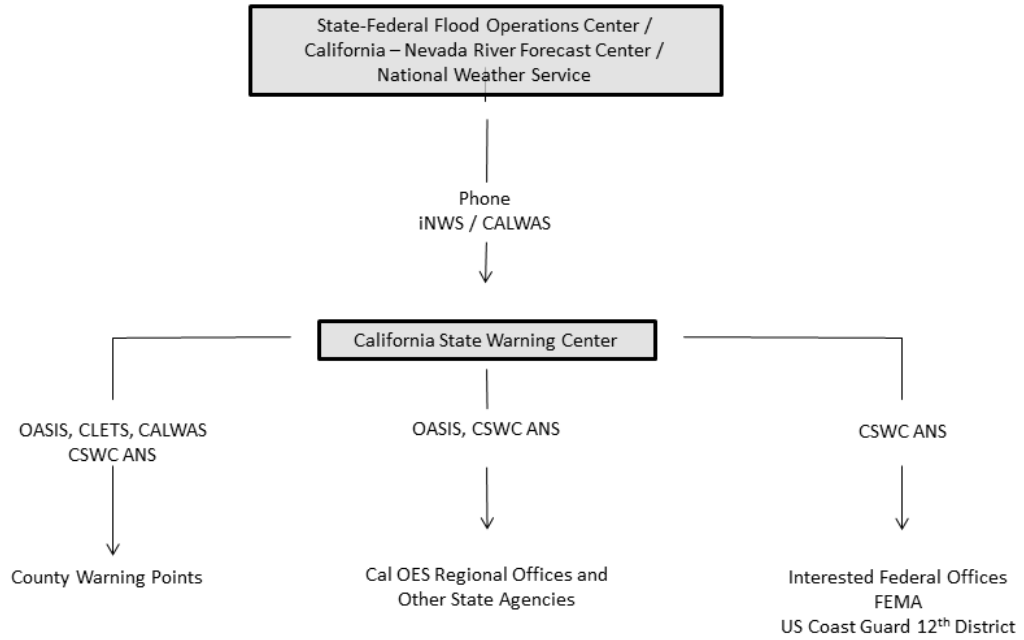


Diagram A.4 – Earthquake Warning System

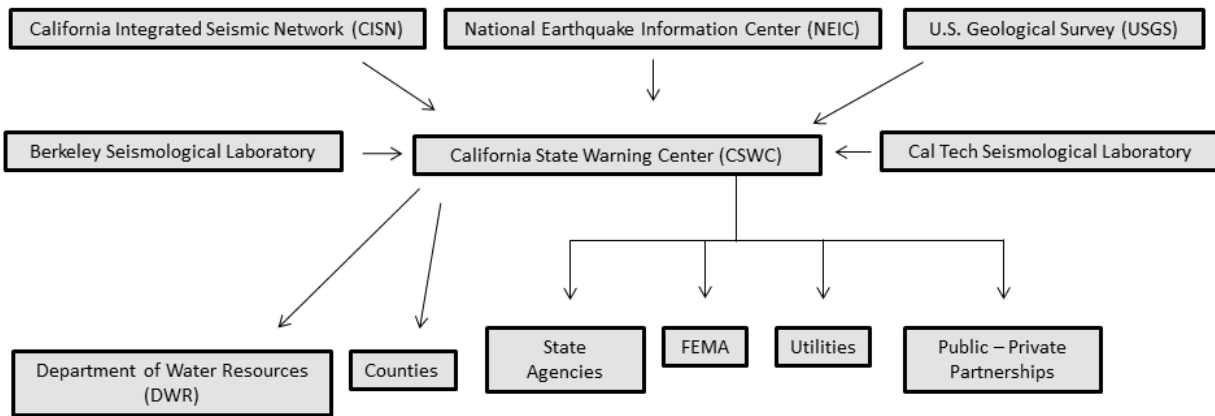


Diagram A.5 – Tsunami Warning System

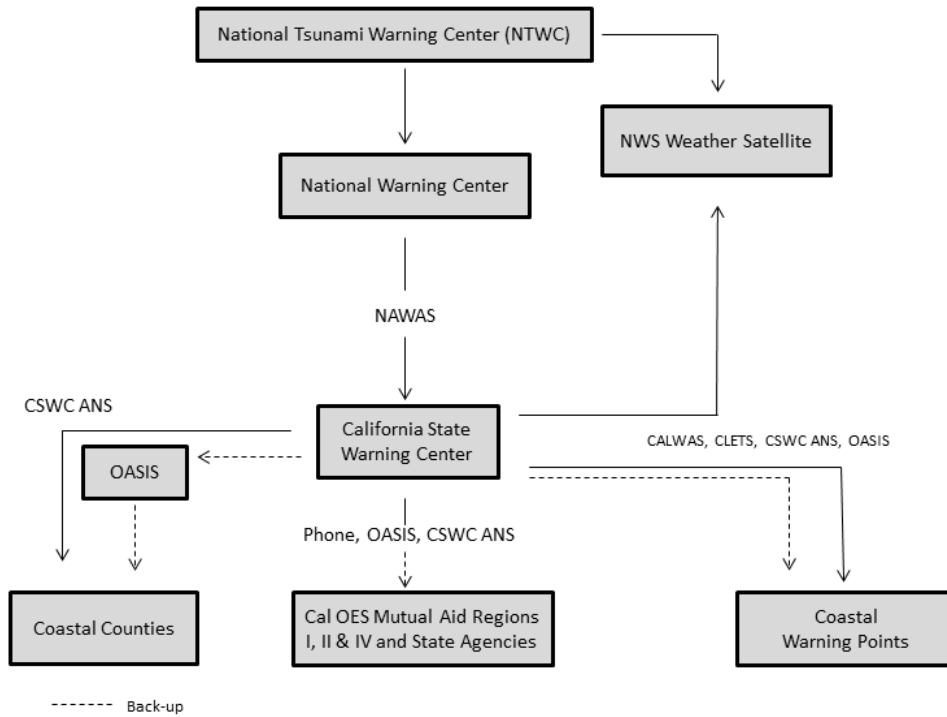


Diagram A.6 – California’s Portion of National Warning System

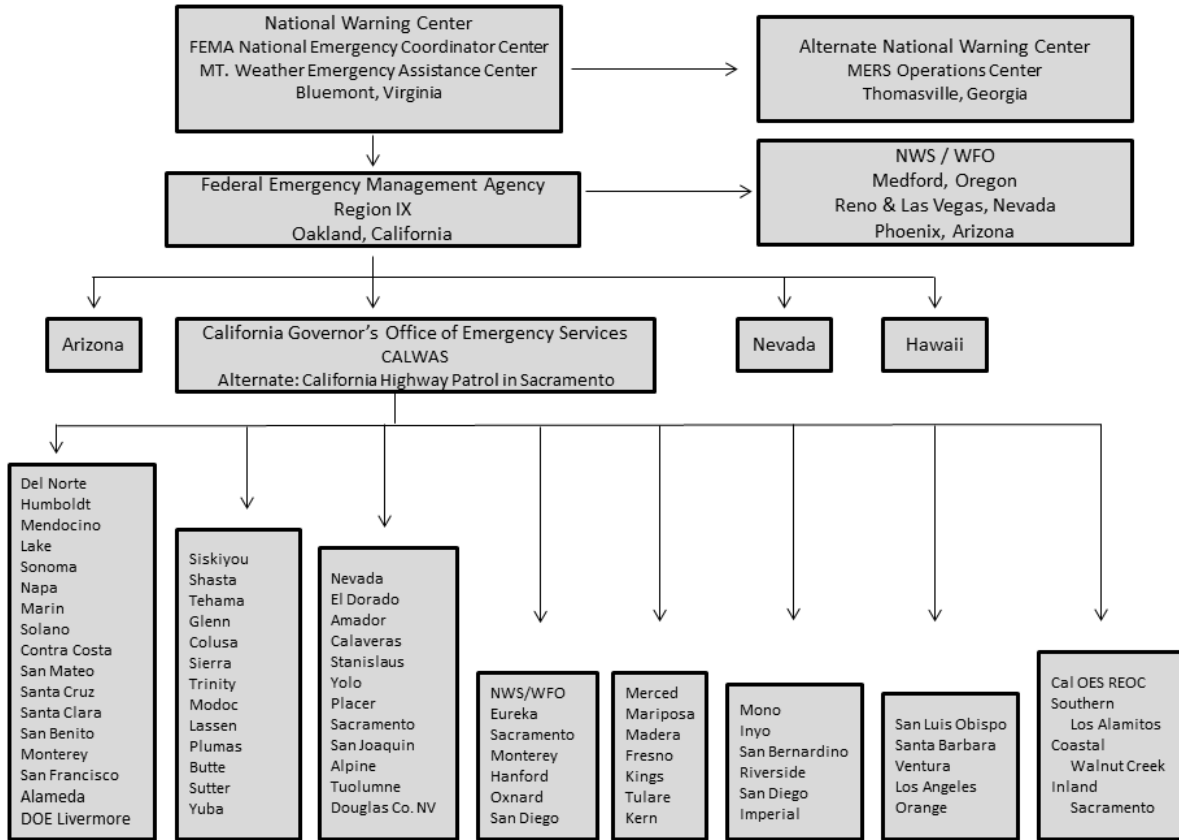
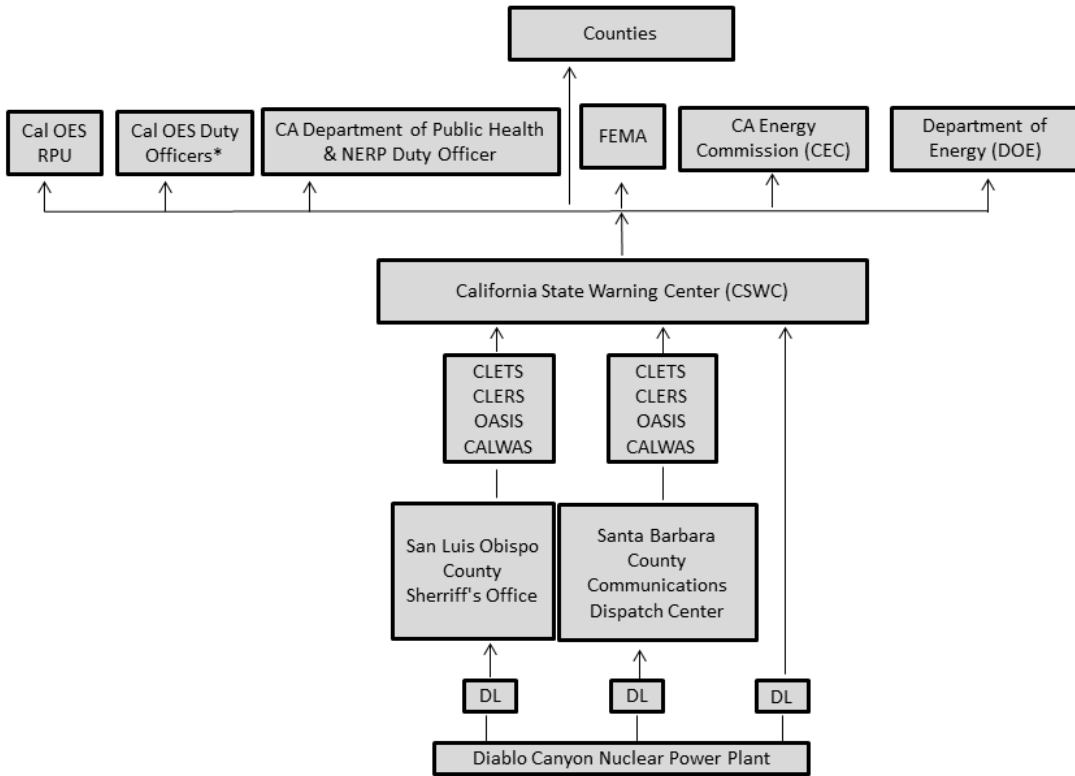


Diagram A.7 – State Nuclear Power Plant Emergency Notification System



*All Cal OES Duty Officers: Executive, Law, Fire, Region, PIO
DL = Direct Line